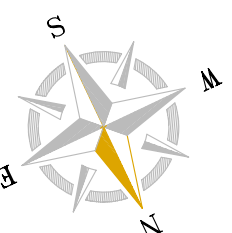
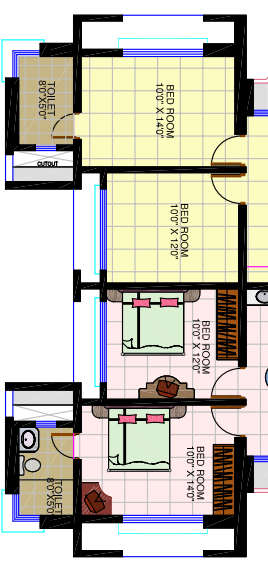
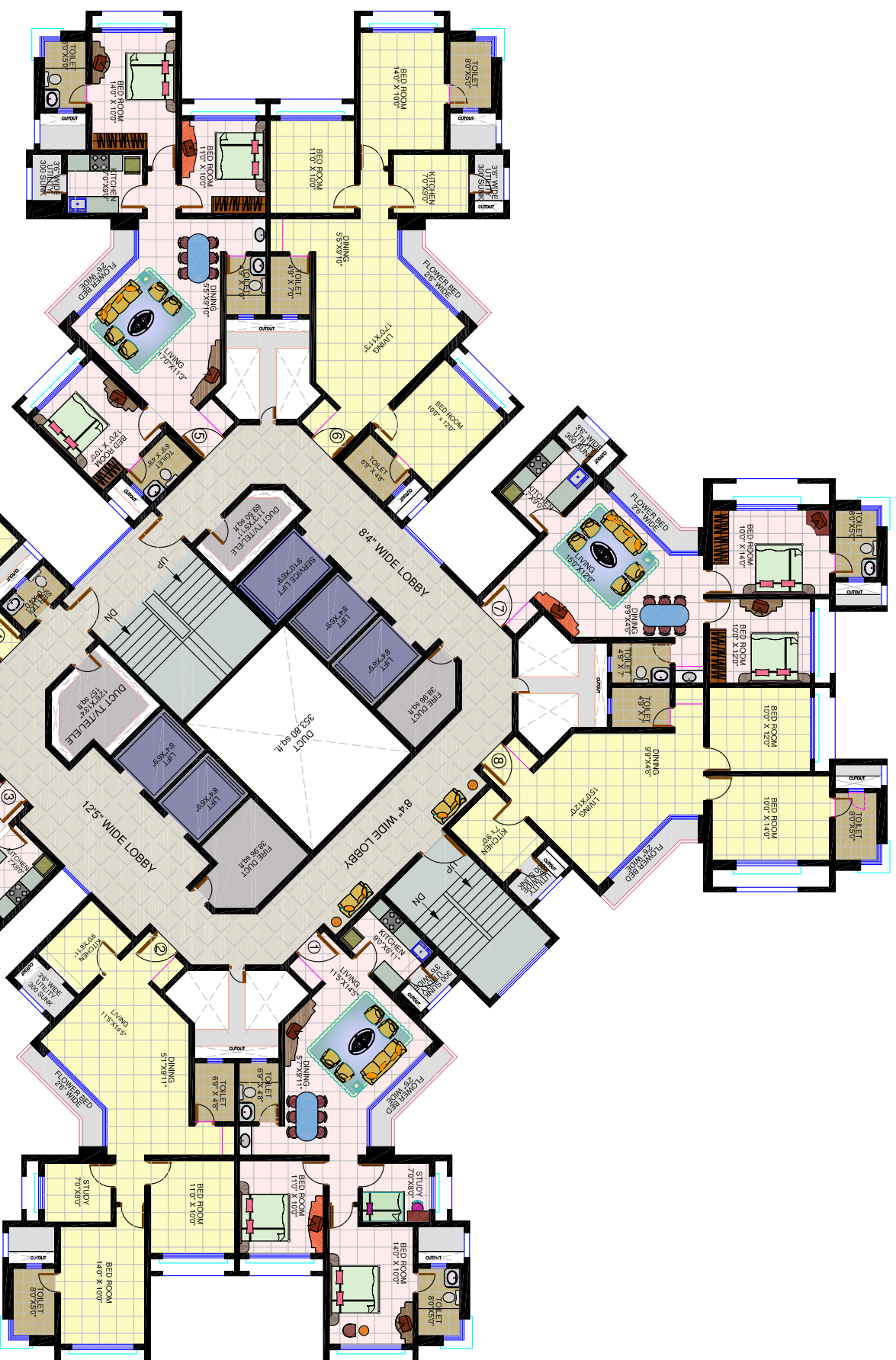
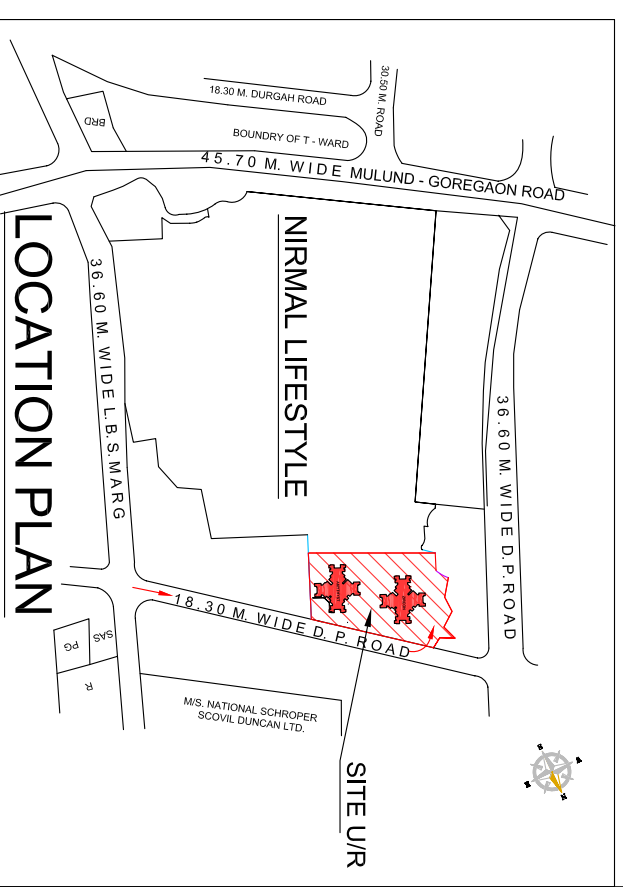


| FLAT NO. | TYPE | CARPET AREA SQ.FT. |
|----------|-----------|--------------------|
| 1 | 2-1/2 BHK | 785 |
| 2 | 2-1/2 BHK | 785 |
| 3 | 2 BHK | 718 |
| 4 | 2 BHK | 718 |
| 5 | 3 BHK | 911 |
| 6 | 3 BHK | 911 |
| 7 | 2 BHK | 718 |
| 8 | 2 BHK | 718 |



TYPICAL FLOOR PLAN
ZIRCON
L. B. S. M A R G



18.3 M. D.P. ROAD



Nirmal Lifestyle

INNOVATING...CREATING...TRANSFORMING

SALES OFFICE
NIRMAL LIFESTYLE CORPORATE OFFICE
3rd FLOOR, MULTIPLEX BLDG.,
L.B.S. MARG, OPP. NIRMAL NAGAR,
MULUND (W), MUMBAI - 400 080.
PHONE NO. 022 - 2537000 / 7100
or customercare@nirmallifestyle.com
or www.nirmallifestyle.com

PHASE - IV RESIDENTIAL BLDG. AT
NIRMAL LIFESTYLE
L.B.S. MARG, MULUND (W)

Architect
Hafeez
Contractor