



The latest offering from Arihant, Abhilasha is a lifestyle residential enclave coming up at Sector 35-H in Kharghar, Navi Mumbai. Located close to the upcoming Central Park, the property is about half-an-hour drive from Kharghar Railway Station and approximately a 40-minute drive from the proposed new international airport. On offer are 2 BHK apartments across two imposing towers of 18 floors each. All the units are air-conditioned and are available in two configurations of 1075 and 1080 square feet size. Leisure amenities within the development include a swimming pool with kids' pool, gymnasium, steam room, indoor games and activity area, party lawn, library cum study area, children's play area, landscaped gardens, etc. Apartment prices begin from INR 38 lac onwards.

- Premium lifestyle enclave from Arihant Developers
- Two 18-storey towers amidst landscaped gardens
- Located in Kharghar, Navi Mumbai, close to upcoming Central Park
- Air-conditioned 2 BHK apartments ranging in size from 1075 to 1080 sq ft
- Amenities include swimming pool, kids' pool, gym, indoor games, etc

Located in one of the prime developing nodes of Sector 35-H in Kharghar, Navi Mumbai, Arihant Abhilasha is close to the upcoming Central Park. The property is about half-an-hour drive from the Kharghar Railway Station and around 40 minutes from the proposed new international airport, which will be expected to be operational in the next 3 years.

Key Distances

- 📍 Kharghar Station - 30 min Drive
- 📍 Proposed new international airport - 40 min drive



Internal Amenities

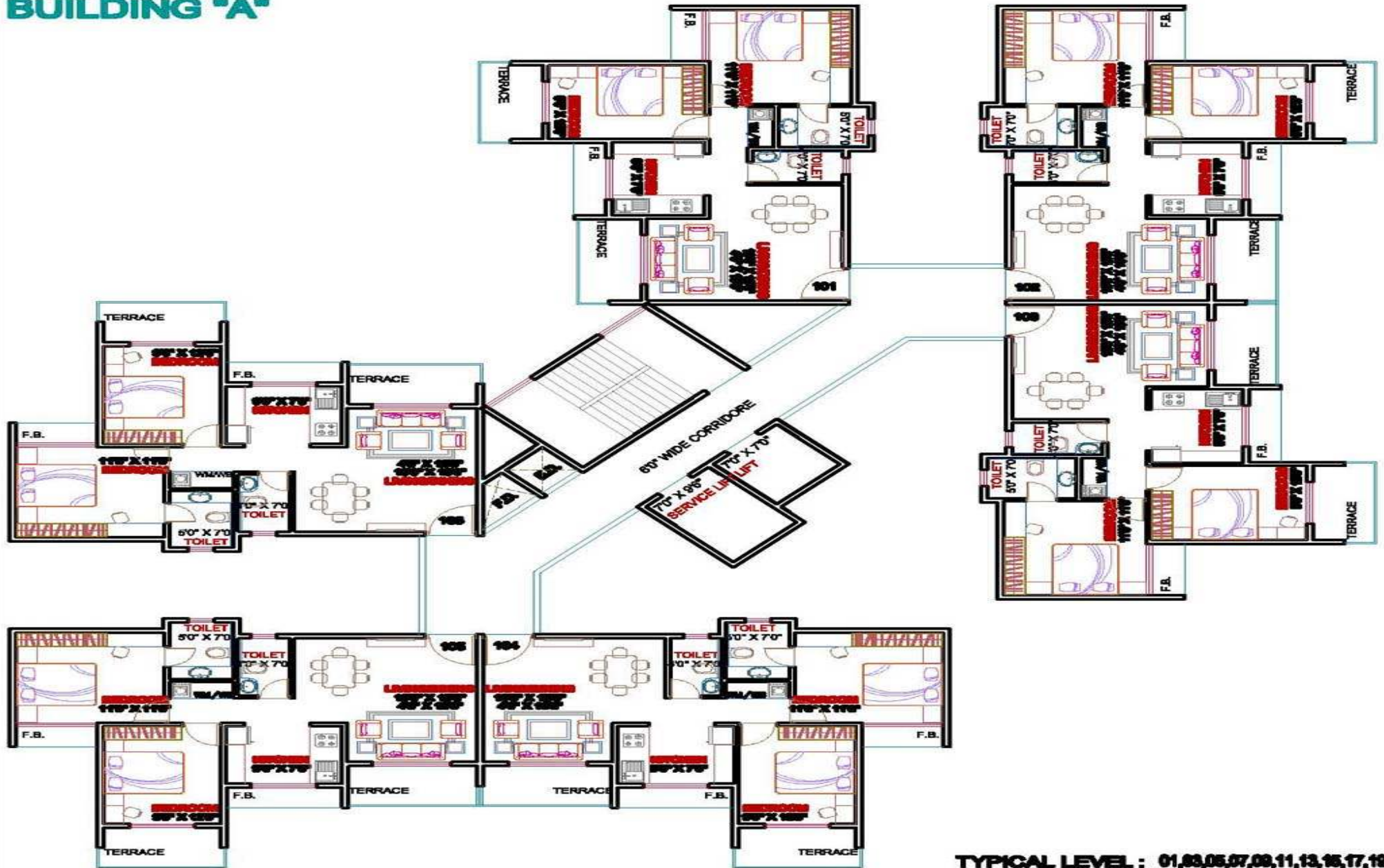
- * Air Conditioner in Two Rooms (Living room & M. Bed room)
- * 3-Burner Gas Hob & Chimney in kitchen
- * Vitrified Flooring in all rooms
- * Granite Top Kitchen Platform with 2 ft. height tiles above Platform
- * Toilets – Fully tiled upto beam level
- * Concealed Plumbing with Premium Quality C.P. Fittings and Branded Sanitary ware
- * Concealed wiring with ample Electrical Points & Modular Switches
- * Aluminium Powder Coated Sliding Windows
- * Video Door Security System with camera at entry gates
- * Lustre or Velvet Touch Paint with POP in all rooms
- * Provision of Space for Wash Basin & Washing Machine
- * Ceramic Flooring on attached Terraces
- * Basement & Ground Level ample Car Parking space (Payable) for each flat.
- * Video Door Security System with camera at entry gates.

External Amenities:

- * G +18 Storey Tower
- * Grand entrance Lobby
- * Swimming Pool with Kids Pool
- * Indoor Games & Activity Area
- * Library cum Study Area
- * Party Lawn with Garden
- * Gymnasium & Steam room
- * Beautifully Landscaped Garden
- * Children's Sand Pit with play equipments
- * Stainless Steel High Speed Lift and Service lift
- * Designer Lift Lobby on all Floors
- * Power Backup for Lifts & Common Areas
- * Ground Level ample Car Parking space (Payable) for each flat
- * Pure Acrylic External Paint all rooms.



BUILDING "A"



TYPICAL LEVEL : 01,03,05,07,09,11,13,15,17,19

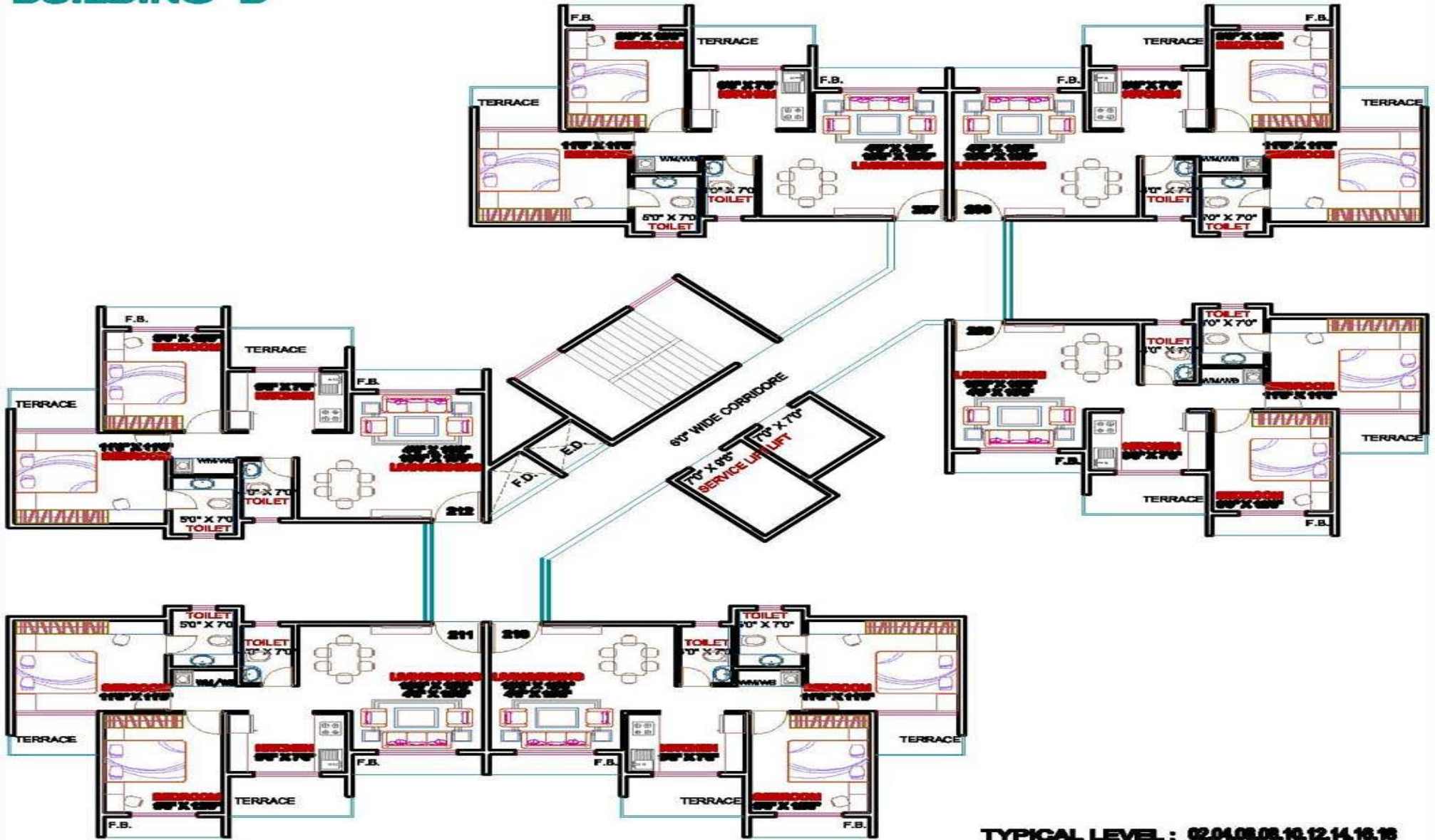


PROJECT NAME :
"ARIHANT ABHILASHA"
 PLOT NO.10, SECT.35TH, KHARSHAR, NWM MUMBAI

DEVELOPER :
"ARIHANT SUPERSTRUCTURES LTD."
 Ph. No. 022-27022 41 42 43 44 45

DIMENSIONS
 ARCHITECTS PVT. LTD.

BUILDING "B"



TYPICAL LEVEL : 02,04,08,09,10,12,14,16,18



PROJECT NAME :
"ARIHANT ABHILASHA"
 PLOT NO.10, SECT.364, KHARWAHA, NAMI MUMBAI

DEVELOPER :
"ARIHANT SUPERSTRUCTURES L.T.D."
 Pl. No. 022 270029 01 02 03 04 05

DIMENSIONS
ARCHITECTURAL

For further booking inquiries please feel free to contact.

Thanks & Regards

Affinity Solutions Pvt. Ltd.

**1110, 11th Floor
Arunachal Building,
Barakhamba Road,
Connaught Place,
Delhi -110001**

Mail us: info@affinityconsultant.com

Visit us: www.affinityconsultant.com

