



LODHA AQUA

An island of luxury

Water view AC homes on Western Expressway

- Located on Western Express Highway, 3 km from Mira Road
- Fully air-conditioned apartments each facing a water feature
- Beautiful landscaping and water features, central park
- Clubhouse, business centre, basketball court, adult and kids' pools, indoor games
- Singapore based landscaped designing firm

Project Details

True to its names, the Lodha Aqua celebrates the blue beauty of water. Its beautiful entrance façade decorated with fountains, the shallow reflecting pools, lily pond and numerous fountains and little streams promises a quiet residence surrounded by beautiful greens lawns and shimmering water bodies. Located in Dahisar, Mumbai, the Lodha Aqua currently offers 2 and 3 BHK apartments along with a few garden bungalow residences. Each of the homes in Lodha Aqua has view of a water feature. The landscaped podium is being designed by Singapore based landscaped design firm Sitetectonix and is laid out in 3 axes - the water axis, the social axis and the garden axis.

The wide range of sports and lifestyle amenities like an international standard gym, the 10000 sq ft multi-level clubhouse, basketball and badminton courts, separate pools for adults and kids, business centre, crèche, sky gardens, etc. ensures a good life for families, kids and corporate professionals alike.

Amenities

- Adult swimming pool with water spigots (for the first time in India)
- Separate pool for kids
- State-of-the-art international standard Gymnasium
- Steam Room & Jacuzzi
- Indoor Games Table Tennis, Chess, Carom
- Card Room
- Snooker / Pool room
- Library
- Lounge & TV room
- Business Center with internet & other facilities
- Convenience store
- Party Hall & Lawn
- Creche
- Sky gardens in select buildings
- Senior citizens' park
- Mini Cricket ground with amphitheatre-style seating
- Badminton Court
- Volleyball-cum-Basketball court
- Jogging track

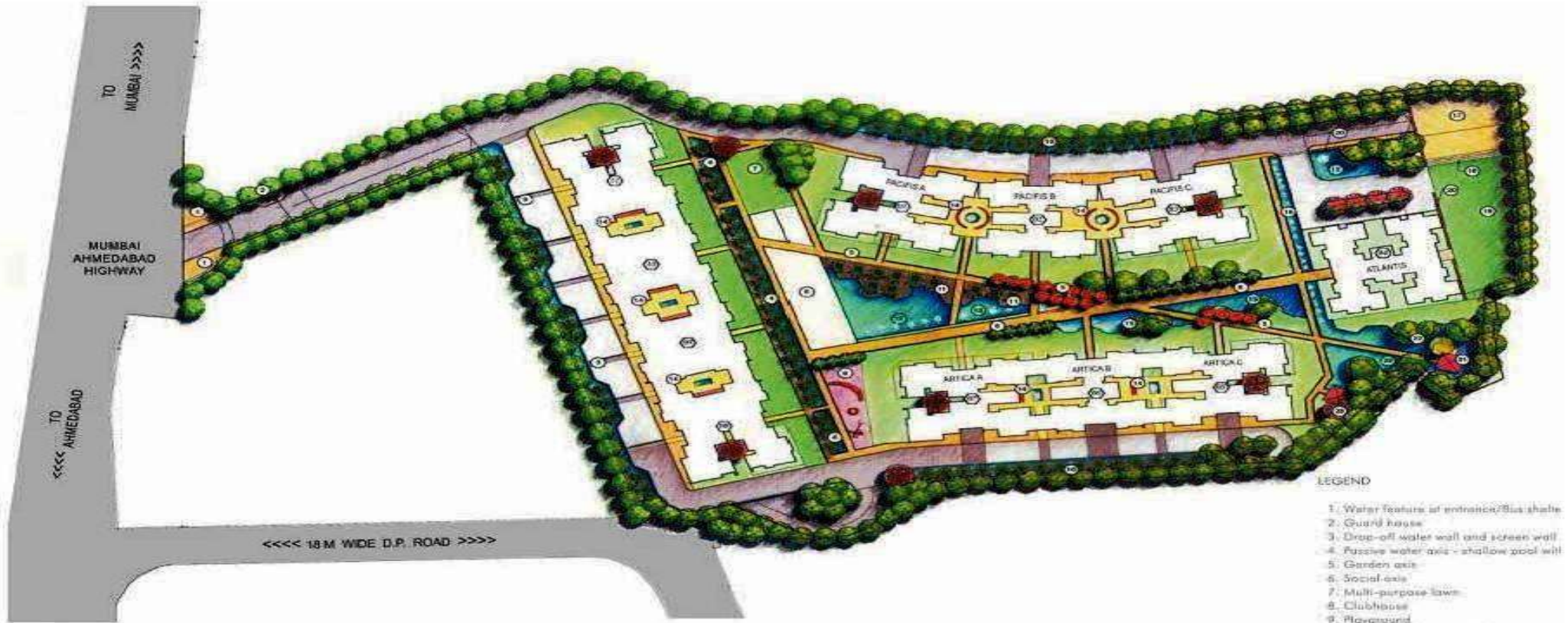


Specifications

- 9 ½ feet floor-to-floor height
- Cross ventilation
- Vastu-compliant design
- Large living room with separate dining area#
- Italian Marble Flooring (except kitchen, bathrooms and service areas)
- Fully Air conditioned homes (except kitchen, bathrooms and service areas)
- Mineral water tap and piped gas in the modern kitchen
- Outdoor Decks with wooden flooring and full-height French windows#
- Separate Pooja Room
- Separate utility area, drying balcony and storage area
- Designer bathrooms with imported tiles and German Kohler sanitary fittings
- Gegeyser in all bathrooms**
- Exclusive Sky Gardens in select buildings
- Italian Marble flooring in entire home
- Vastu compliant layout
- Fully Air-conditioned Home, Cross ventilation
- Separate Puja area in living room
- outer decks with wooden flooring & full height French height windows
- American Kohler windows
- Mineral water ontap in every kitchen
- Piped gas facility
- Bathroom finished with designer tiles and fittings
- Geyser in all bathrooms
- Security
- Controlled access to complex with guest checking and monitoring
- CCTV monitoring of common areas
- Swipe card access to the building lobby
- Video doorphone in each home
- Integrated Security Management System for entire complex
- Emergency alarm in each home
- Gas detector in a kitchen



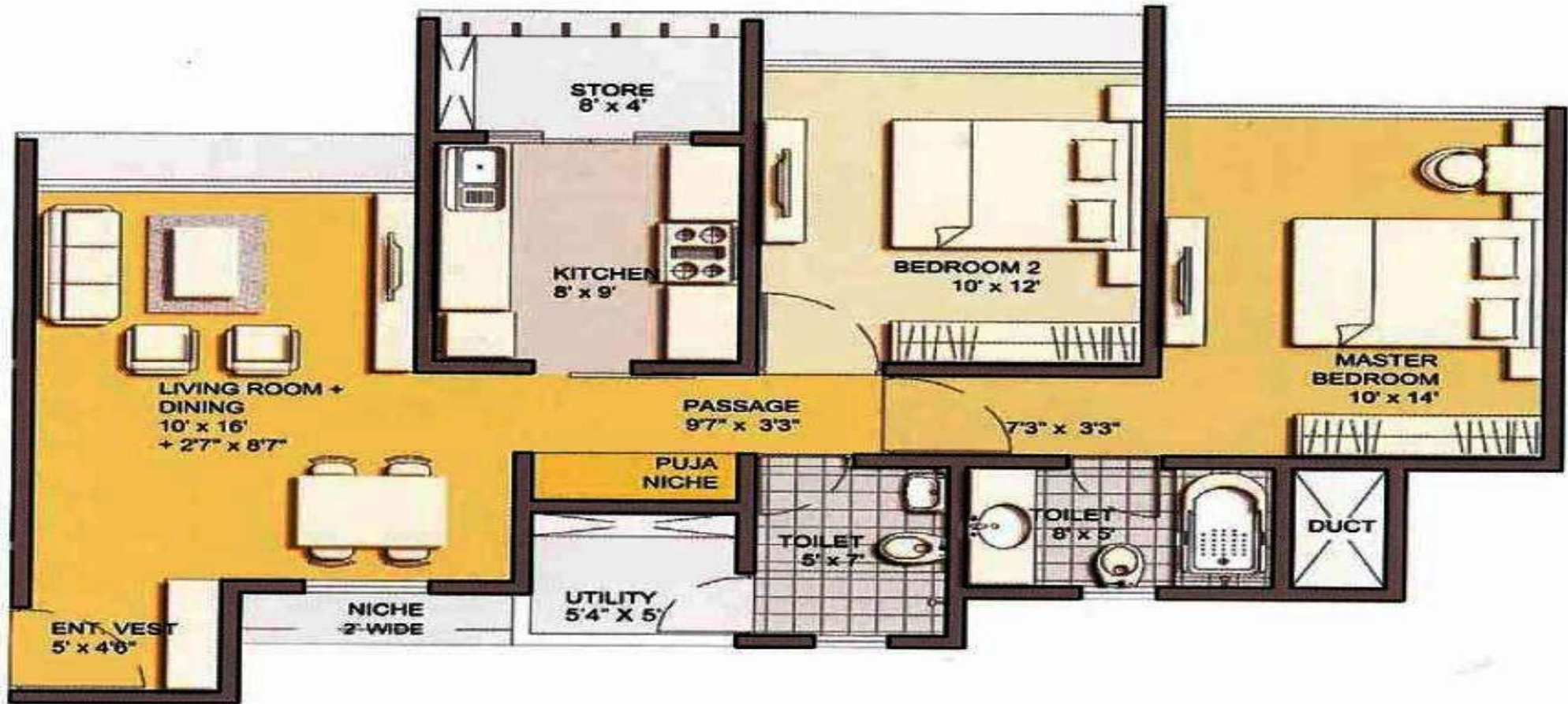
Layout Plan



LEGEND

1. Water feature at entrance/Bus shade
2. Guard house
3. Drop-off water wall and screen wall
4. Passive water axis - shallow pool with
5. Garden axis
6. Social axis
7. Multi-purpose lawn
8. Clubhouse
9. Playground
10. Water wall/Feature pool
11. Timber pool deck
12. Adult's pool with water spigots
13. Children's pool with water spigots
14. Courtyard
15. Reflecting pool
16. Shallow pool
17. Volleyball/Basketball/Badminton
18. Amphitheatre steps
19. Cricket pitch
20. Feature wall

Typical 2 BHK Floor Plan



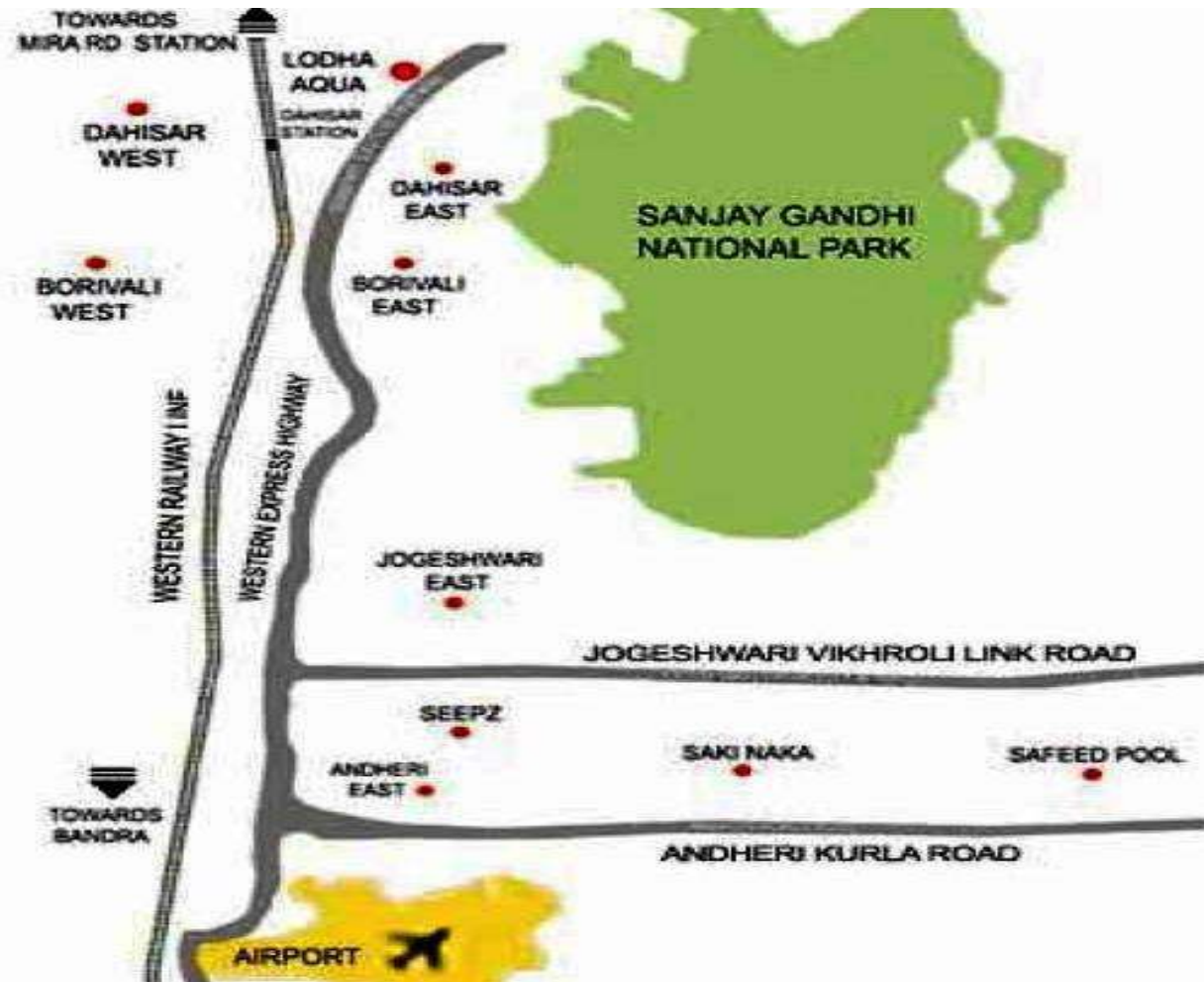


Location

The Lodha Aqua is located on Western Express Highway, in Dahisar just a few steps away from the Dahisar checkpoint. The development is located about 3 km from Mira Road and Dahisar railway stations. The Gidbunder Road which connects Thane is a short drive from here. Several upcoming malls and residential complexes and the prestigious IB school are nearby.

Key Distances

- Dahisar railway station 3 km
- Mira Road railway station 3 km
- Thane 30 min
- Dadar 40 min via Western Express Highway
- Domestic airport 25 min



Booking & Payment

Booking can be made in FEWEASY STEPS.

1. Identify your apartment: Our Property Advisor will assist you with full details of the project, viz Floor Plan, Application Form, Cost Break Up, Payment Schedule and other details.
2. Fill up the Application Form and send the same to our nearest office along with the payment of Rs 54,000/- & 20 % payment within 30 days from the date of Booking. Rest as per payment plan. You can also opt for easy installment scheme and book you property.
3. Upon clearing of the cheque you will be sent the Money Receipt, Sale Agreement/Allotment letter.

Cheques/Drafts to be issued in favor of developer

If you require site visit by friend or relative, it can be arranged within 24 hours

Home finance options are available from leading banks.

CALL or send ENQUIRY and our property advisor are available 24x7 to answer your queries and assist you in booking of your property.

NOTES: The developer reserves the right to alter/enhance the above mentioned additional expenses. The amount mentioned here are indicative.

Thanks & Regards

Affinity Solutions Pvt Ltd.

Visit us - www.affinityconsultant.com

Or Write us - info@affinityconsultant.com