

Rustomjee' AT URBANIATHANE

INDRODUCTION

Rustomjee Acura is the third bequest of Urbania at Thane. This property will be perched up on a 2 level podium and will enjoy an array of benefits which will create a new value of living. With only 2 BHK apartments and coupled with its value proposition, Rustomjee Acura is tailor made for the modern family of India.

AMENITIES

Living Room:

1. Vitrified tiles flooring
2. Telephone & Cable T.V. Provision
3. Lockable sliding windows with aluminum anodized frames
4. Provision for high wall split A.C.
5. Main door with teak door frame & 45 mm thick flush door

Kitchen Areas:

1. Granite platform & S.S. Sink
2. Branded ISI marked CP fittings & Vitrified tile flooring
3. 2' Dado above kitchen Platform

Bedrooms:

1. Internal doors with red miranti door frames & 35 mm thick flush door
2. Good quality mortice lock with key from outside & clit from inside
3. Telephone & cable T.V. Provision
4. Lockable sliding windows with aluminum anodized frames
5. High wall split AC provision

Bathrooms:

1. Granite door frames
2. Water proof PVC & FRP doors
3. Antiskid tile flooring with Ceramic dado
4. Wall mounted European WC
5. Wash basin & Branded ISI marked CP fittings
6. Electric points for Hair Dryer/Electrical shaver point
7. Shower System

PROXIMITY

VISIT US AT www.affinityconsultant.com
WRITE US AT info@affinityconsultant.com

Rustomjee' AT URBANIATHANE

Thane Station.

Eastern Express Highway

Ghodbunder Road

Navi Mumbai, Kalwa, Dombivali, Kalyan, Bhiwandi, Nasik, Mulund, Ghatkopar, Chembur, Borivili

External Features:

1. Wet risers with hose reels
2. Public address systems
3. Rain Water Harvesting Systems
4. Decorative entrance lobby & High speed automatic elevators
5. Landscape gardens
6. Solar panels on terraces
7. External Anti-fungal paint on outer walls with biocides
8. Sewage Treatment Plant

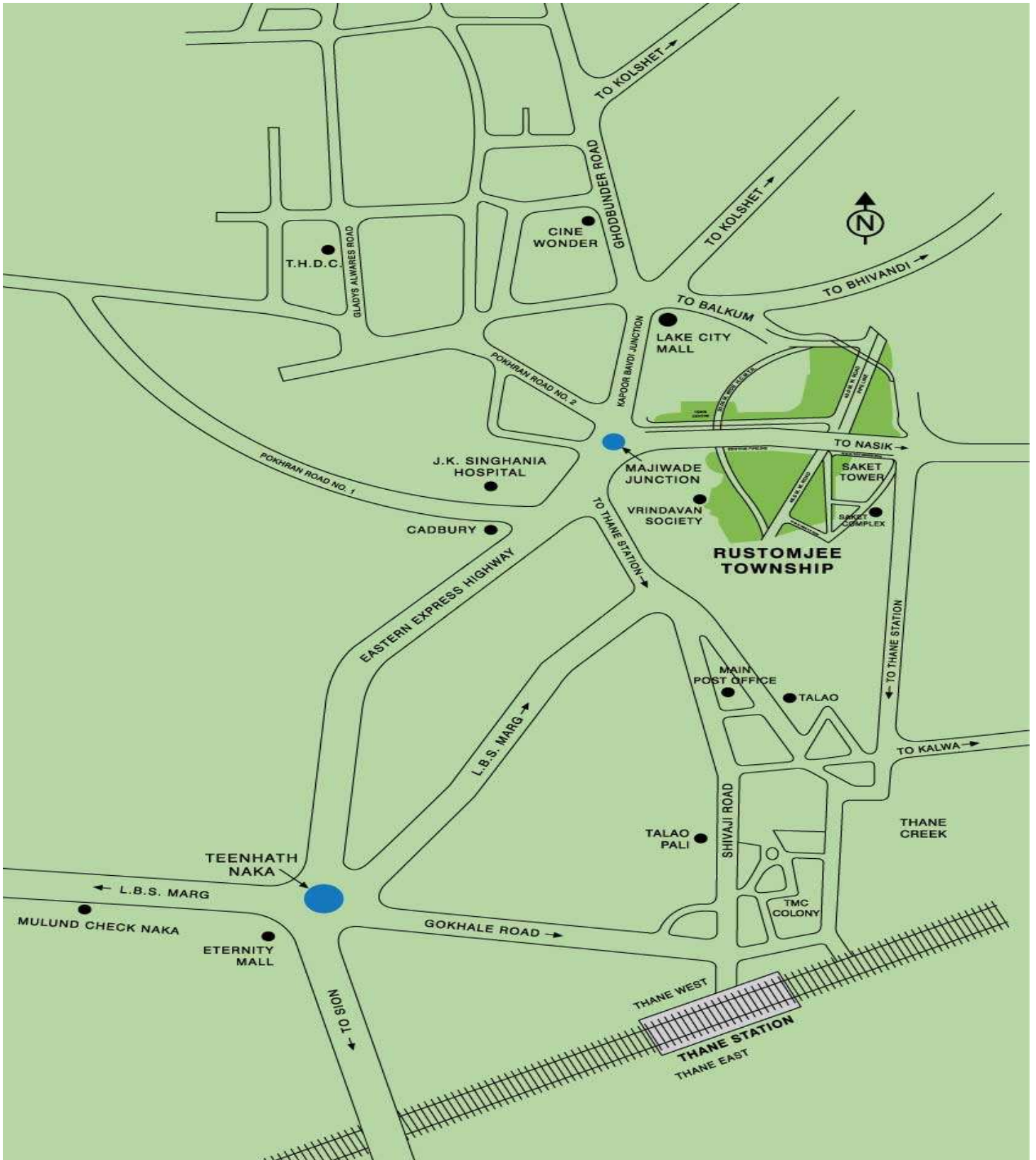
Security Features:

1. Video Door Phone
2. Intercom facility
3. ELCB switches
4. Earthquake Resistant structures
5. Fire fighting equipments
6. 24x7 recording of security cameras with 7 days back up

Safety Features:

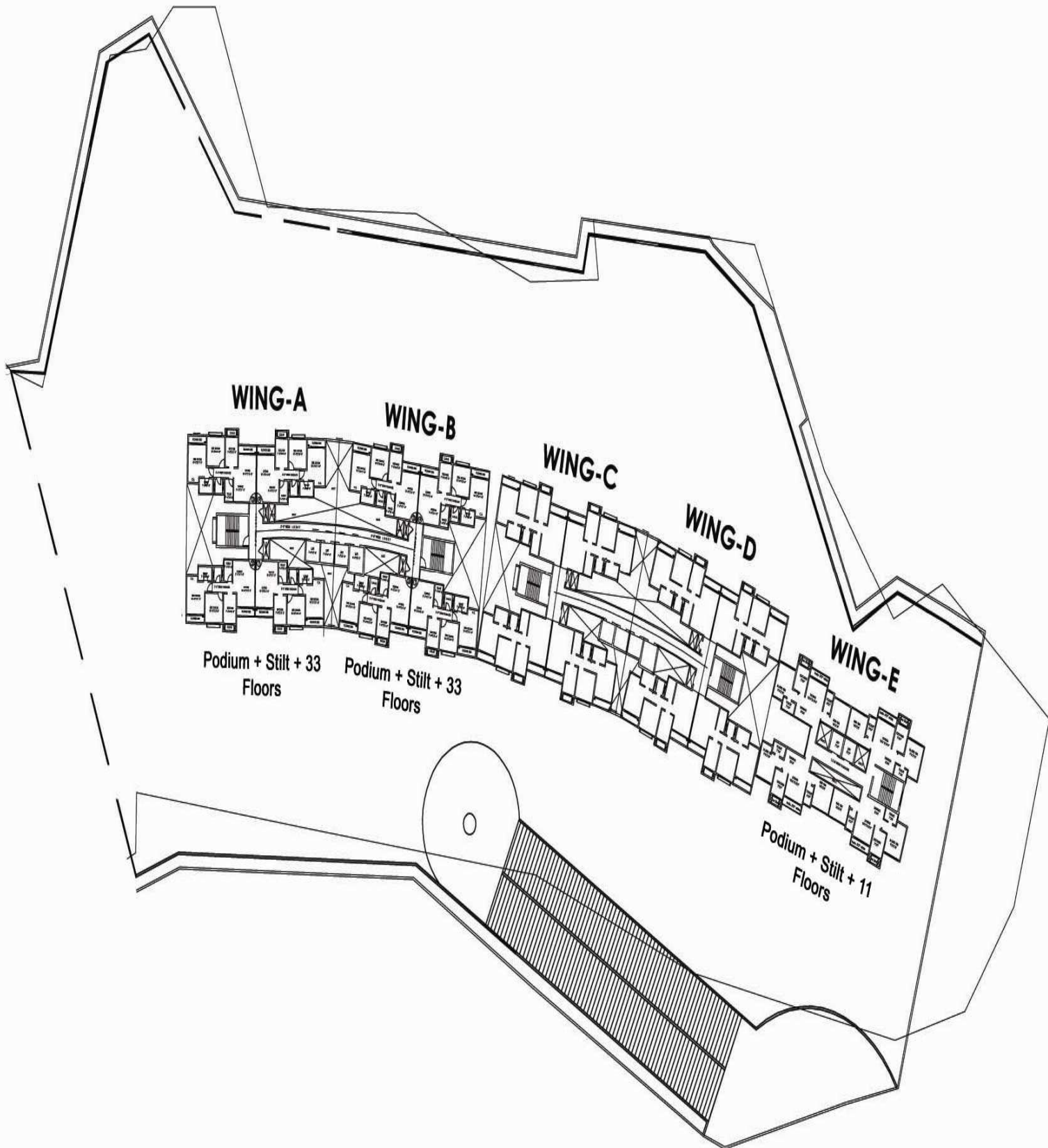
1. Fire Extinguishers at security cabin
2. PA system for the entire building
3. Earthquake resistant structure
4. Lightning arrestor

Rustomjee' AT URBANIATHANE



VISIT US AT www.affinityconsultant.com
WRITE US AT info@affinityconsultant.com

Rustomjee' AT URBANIATHANE



VISIT US AT www.affinityconsultant.com
WRITE US AT info@affinityconsultant.com

Rustomjee' AT URBANIATHANE

PAYMENT PLAN (WING - 1)

a) On Booking (As a Token)	31000
b) Within 45 Days	10%
c) On Completion of Plinth	10%
d) On Completion of Podium Slab	10%
e) 1st Slab	5%
f) 3rd Slab	5%
g) 6th Slab	5%
h) 9th Slab	5%
i) 12th Slab	5%
j) 15th Slab	5%
k) 18th Slab	5%
l) 21st Slab	5%
m) 24th Slab	5%
n) 27th Slab	5%
o) 30th Slab	5%
p) Top Slab	5%
q) On Completion of Plumbing	5%
r) <u>Possession</u>	<u>5%</u>
Total	100%

PAYMENT PLAN (WING - 2)

a) On Booking (As a Token)	31000
b) Within 45 Days	10%
c) On Completion of Plinth	10%
d) On Completion of Podium Slab	10%
e) 1st Slab	5%
f) 3rd Slab	5%
g) 6th Slab	5%
h) 9th Slab	5%
i) 12th Slab	5%
j) 15th Slab	5%
k) 18th Slab	5%
l) 21st Slab	5%
m) 24th Slab	5%
n) 27th Slab	5%
o) 30th Slab	5%
p) Top Slab	5%
q) On Completion of Plumbing	5%
r) <u>Possession</u>	<u>5%</u>
Total	100%

Thanks & Regards,

AFFINITY SOLUTIONS (P) LTD

VISIT US AT www.affinityconsultant.com
WRITE US AT info@affinityconsultant.com